

Product family



**CES-J200/J150/
J120
(big size)**

- System power **185W/ 150W/ 120W**
- System lumen 24050/ 19500/ 15600 lm
- CCT 3000K/4000K/ 6500K
- CRI 80
- Optic WB/NB
- IP rating IP68
- Mounting hook/pole/bracket
- Voltage 95-305V/50-60Hz
- Dimension 400x400x165mm



**CES-J100/J80/
J60
(medium size)**

- System power **100W/80W/60W**
- System lumen 13000/ 14000/ 7800lm
- CCT 3000K 4000K/ 6500K
- CRI 80
- Optic WB/ NB
- IP rating IP68
- Mounting hook/pole/bracket
- Voltage 95-305V/50-60Hz
- Dimension 300x300x155mm



**CES-J40/J30
(small size)**

- System power **40W/ 30W**
- System lumen 5200/ 3900 lm
- CCT 3000K/4000K/ 6500K
- CRI 80
- Optic WB/ NB
- IP rating IP68
- Mounting hook/pole/bracket
- Voltage 95-305V/50-60Hz
- Dimension 200x200x153mm

Multiple mounting options for Versatile applications

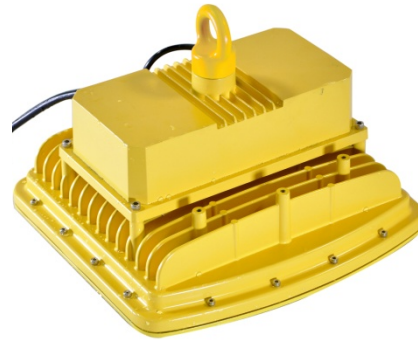
Pipe



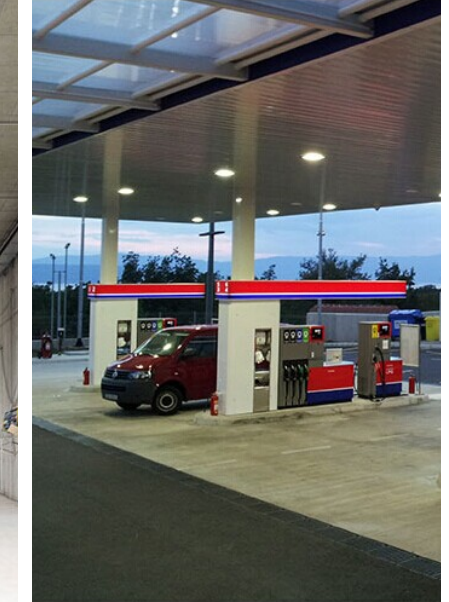
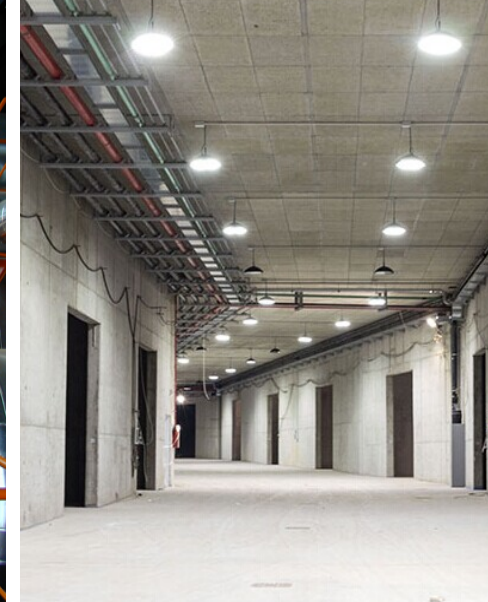
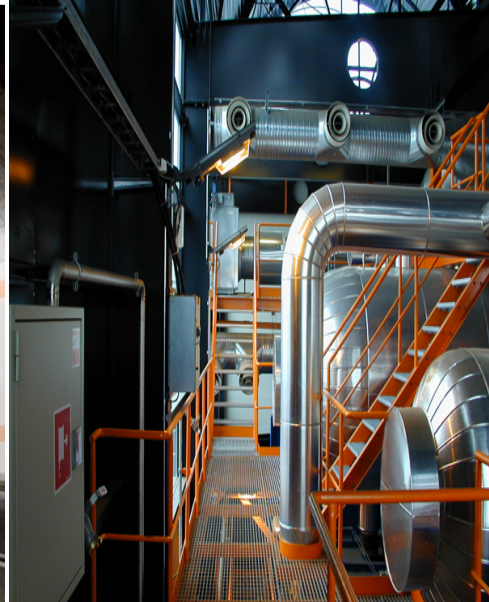
Foundation



Suspension



Bracket



| Specification | CES-Series High bay | | |
|---------------------|--|----------------------|-----------------------|
| Product family | CES-J30 40 | CES-J60 80 100 | CES-J120 150 200 |
| System power | 30W/ 40W | 60W/ 80W/100W | 120W/ 150W/185W |
| System output | 2790lm/ 3720lm | 5580/ 10400/ 13000lm | 15600/ 19500/ 24050lm |
| System efficiency | >130 lm/W | | |
| CCT | NW (4000K) CW (6500K) | | |
| CRI | 80 | | |
| SDCM | SDCM<5 | | |
| Optical | WB NB | | |
| IP rating | IP68/ IK09 | | |
| Classification | Class II | | |
| Materials | USA bridgelux chip BXC45/Cree/Philips | | |
| | body: Japan ADC12 High-quality die-cast Aluminum Alloy | | |
| | Seal: burn-proof Anti-aging silicone rubber ring | | |
| | Aluminum PCB board : Thickness 2.0mm and LENS Integrated with LED chip | | |
| | Cover: 4mm high transmittance tempered glass | | |
| Lifetime | 70000 hrs (LM80) | | |
| Color | Grey / Milky white (the other on requests) | | |
| Dimension | | 300*300*175mm | 400*400*185mm |
| Weight | kg | 7.5kg | 11.5kg |
| Control | 1~10V* | 1~10V | 1~10V |
| Driver | Meanwell LED driver | | |
| Input Voltage | 90~305VAC | 90~305VAC/180~528VAC | 90~305VAC/180~528VAC |
| Power factor | > 0.97 | | |
| Mounting | Hook/pole/bracket/Foundation | | |
| install accessories | lift eye bolt | Pipe fitting | rotatable gear |





II 2G Ex eb mb IIA T4 Gb
III 2D Ex tb IIC T(95 °C) Db